

# Two Piece Product Box P37

Material colour	white or craft
Colour space	CMYK
Print areas	lid + base
Outside dimensions	17 x 17 x 2.4 cm

1. Please note that print on kraft material is less saturated.

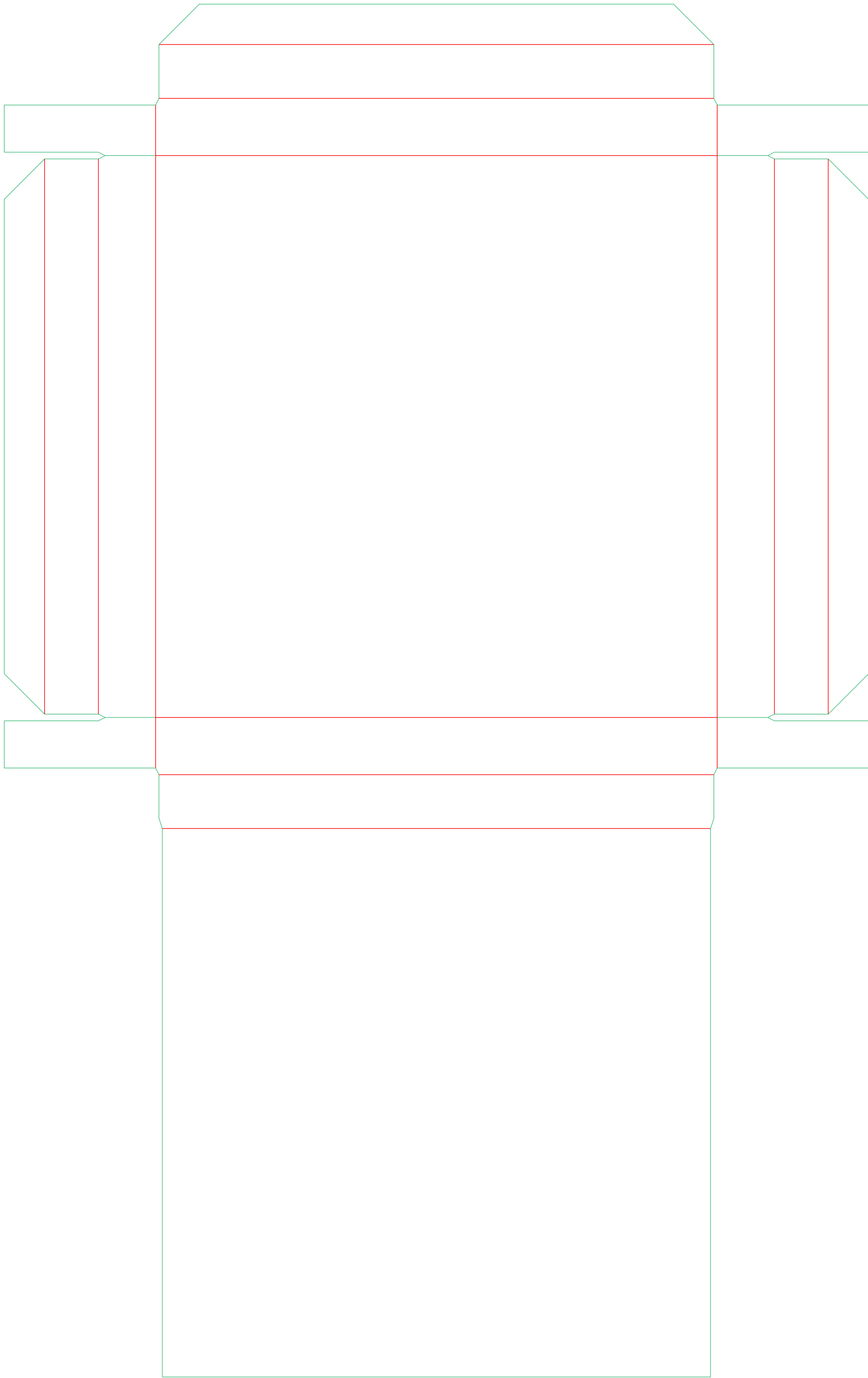


2. Make sure that all the blacks in your design have CMYK value:  
C 0% M 0% Y 0% K 100%.
3. We don't print white colour.

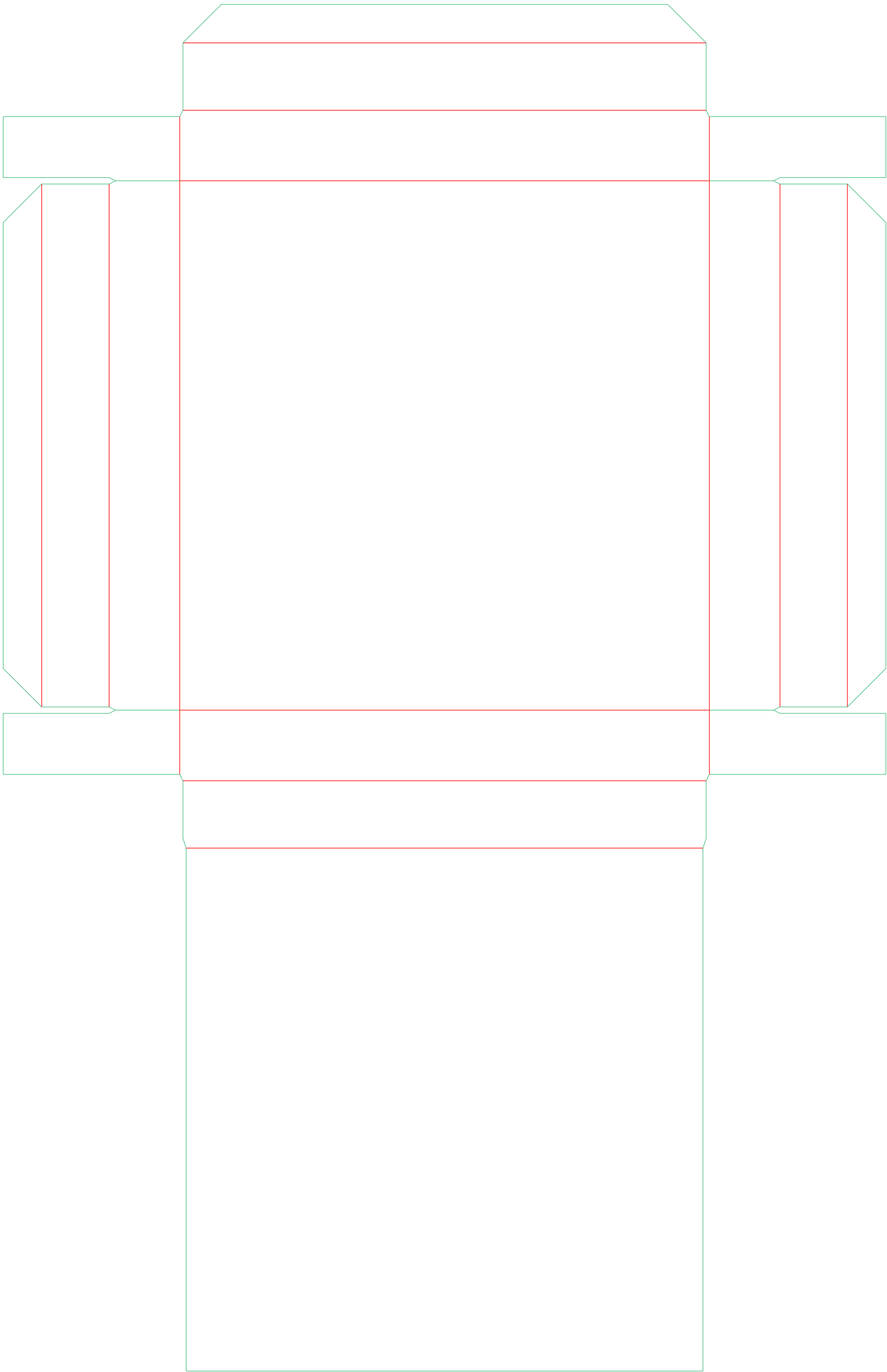


In case of any doubt contact us via chat or at [contact@packhelp.com](mailto:contact@packhelp.com)

lid



base

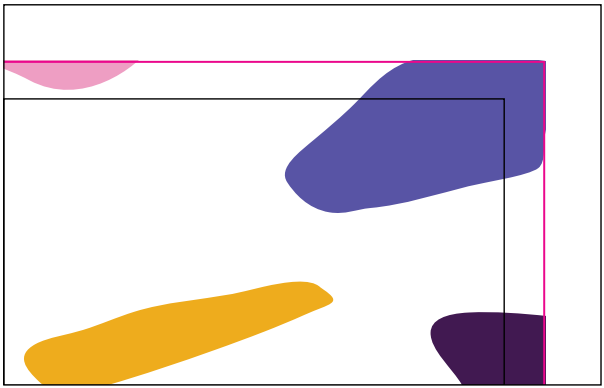


## Your checklist

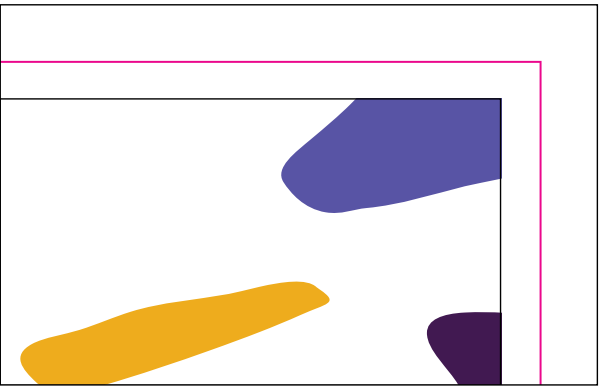
For best quality and smooth production make sure that your design meets our specification and use our checklist.

- ☐ **Graphics**  
The design should contain vector graphics or/and embedded bitmap graphics with resolution over 300 dpi.
- ☐ **Colours**  
Use only CMYK colour palette.  
We don't print with PANTONE® colours.
- ☐ **Lines & Text**  
The lines should not be thinner than 0.5 pt.  
The text size should not be smaller than 8 pt.  
Make sure all texts are converted to outline before uploading file.
- ☐ **Safe Area**  
Make sure that all important elements of your design (logo, text etc.) are placed at least 5 mm from all of the the die lines.
- ☐ **Bleeds**  
Extend your design with 5 mm bleeds to avoid non-printed edges.

☐ **Bleed area**



✓ DO



✗ DON'T